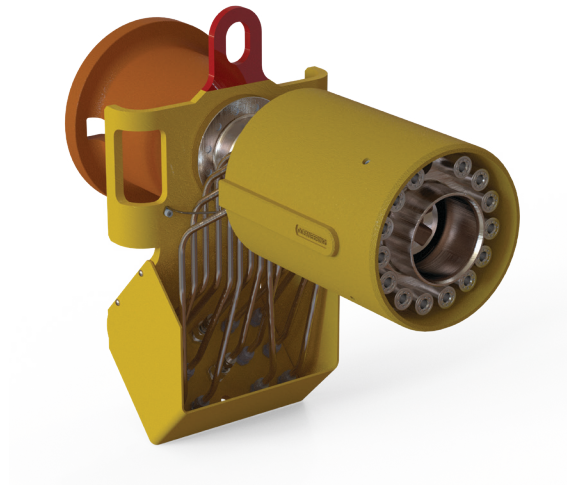


Raptor Termination Head

Robust, lightweight solution for short-length flying leads

Our lightweight termination head weldment eliminates structural welding and delivers an easily-maneuverable, lighter, and cost-effective solution. Ideally suited for use with shorter length thermoplastic flying leads and direct-connect and looping logic architecture, the Raptor termination head integrates our existing field-proven subsea hardware components to deliver an optimized solution.



FEATURES

Suitable for topside, vertical, and horizontal installation

Reduces lead-time by up to 50%

Integrates field-proven components including the Mini M Series Junction Plate

Raptor Termination Head

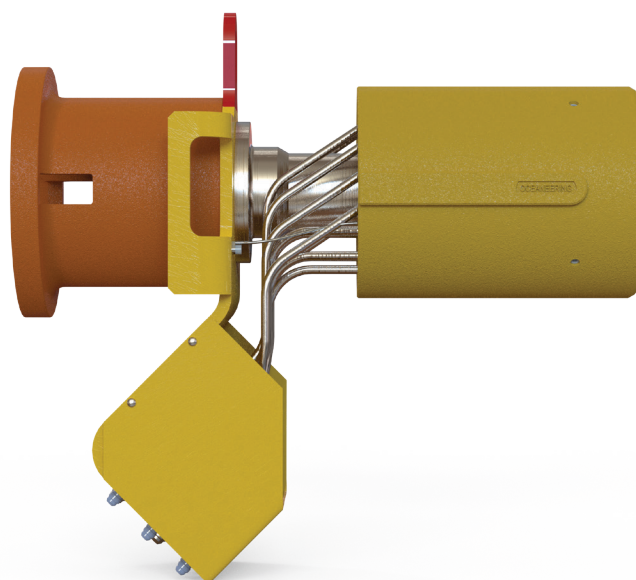
Robust, lightweight solution for short-length flying leads

The Raptor termination head design has been developed using valuable customer feedback and input from subsea tree manufactures to ensure all operational requirements are met. The design eliminates costly structural welding and the integration of polymer components reduces the structure's overall weight.

The elimination of structural welding in the design significantly reduces the engineering documentation and procedures required for manufacturing while eliminating the risk associated with necessary rework. The lightweight design also supports easy handling during topside assembly and testing.

Technical Data

Configuration	0-degree design
Dimensions	28 7/16 in X 27 5/16 in X 15 7/16 in 721.9 mm X 693.7 mm X 391.8 mm
Weight in air	174 lb / 78.8 kg
Weight in water	148 lb / 67.1 kg
Water depth rating	10,000 ft / 3000m
Pressure rating	15,000 psi
Design life	25 years
Junction plate integration	Oceaneering M Series or free issued



© 2021 Oceaneering International, Inc. All rights reserved.