

Remotely Operated Metrology

Integrated ROV and metrology services



FEATURES

Cost-effective solution supports safe operations

Innovative technology minimizes logistical challenges

Reduces HSE exposure

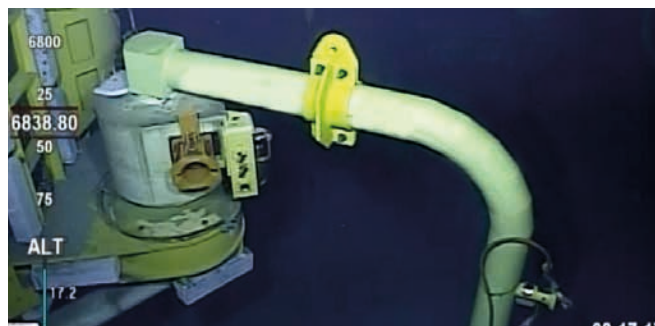
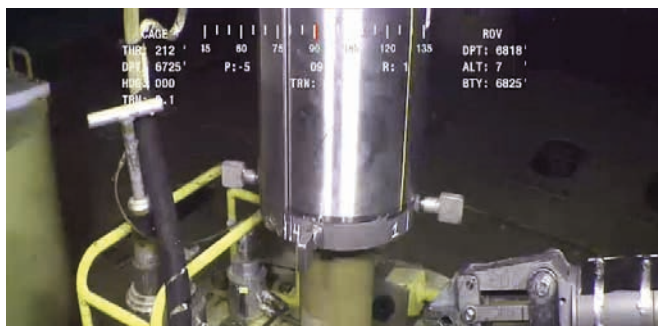
Remotely Operated Metrology

Integrated ROV and metrology services

Oceaneering has decades of experience performing surface navigation and subsea metrology. We use specialized inertial and acoustic metrology techniques to accurately measure distances, elevations, and orientations of connecting surfaces of subsea assets.

With advancements in technology and industry demand for efficient, risk-reducing solutions, we are able to offer remotely operated metrology services.

The cost-effective remotely operated metrology solution optimizes efficiencies and reduces HSE exposure while completing required metrology and eliminating the need for additional personnel on board a vessel. Using this integrated solution, metrology can be completed by remotely-located, qualified surveyors based at globally positioned Oceaneering offices. The client is provided with a final well jumper metrology drawing based on the remotely generated data.



Cost Effectiveness and Time Savings

- » Single mobilization of metrology equipment
- » Reduction in cost for personnel located on the rig during activities
- » Elimination of mobilization and demobilization costs and the requirement for work visas for the metrology services crew
- » Single invoice includes ROV and metrology services
- » Faster reporting and delivery of final metrology report

Additional Benefits

- » Qualified personnel remotely monitor metrology activities in real-time
- » Operations can be viewed in real-time by the operator, where offshore support can be given in real-time
- » ROV technicians on board can deploy and adjust hardware
- » Eliminates local labor requirements and decreases HSE exposure hours for personnel on the rig, specifically in reducing possible COVID-19 exposure
- » Releases rig bunk space for other essential personnel
- » Decreases carbon footprint by reducing the transportation requirements for equipment and personnel
- » Avoids the delay of equipment arrival due to customs

© 2022 Oceaneering International, Inc. All rights reserved.