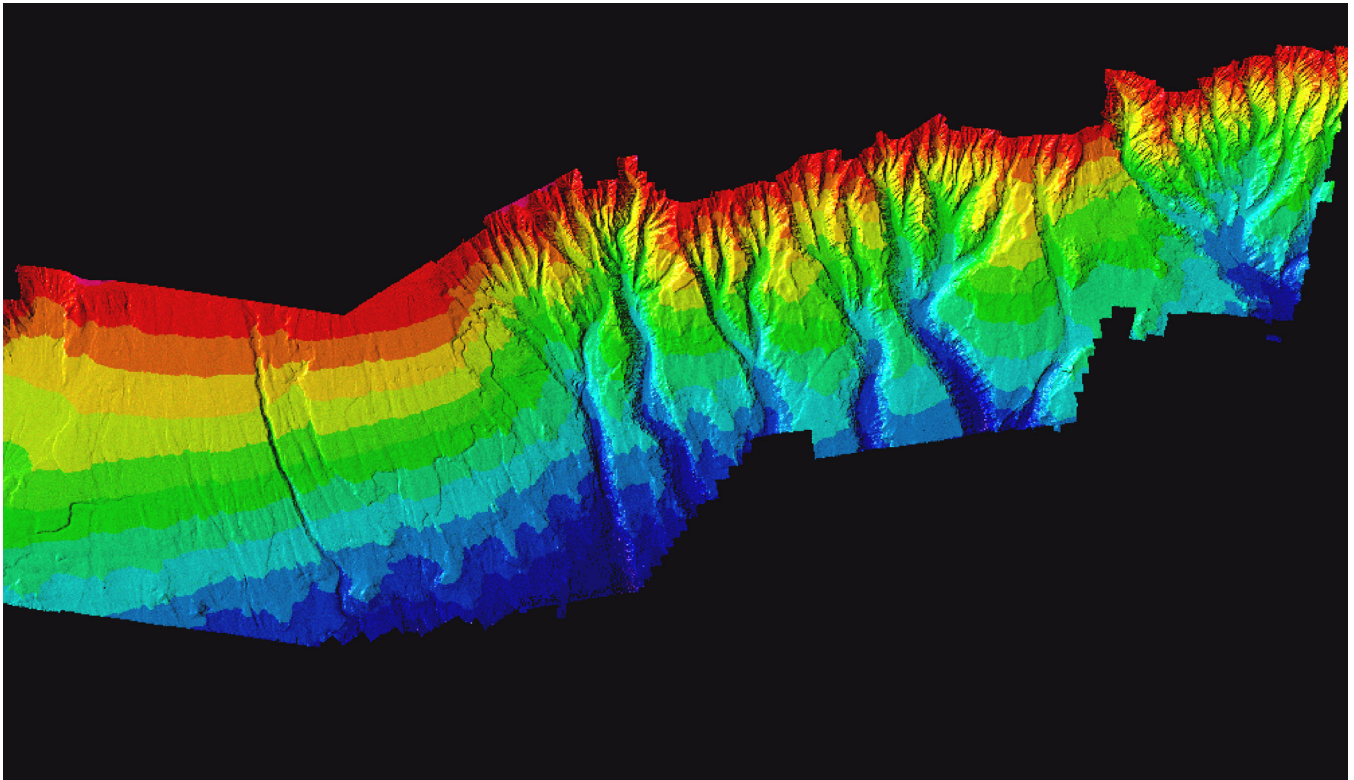


Geophysical Surveys



Our fleet of hull-mounted and AUV-mounted multibeam systems use our proprietary HydroMap software to provide near real-time, precise seafloor charts from water's edge to full ocean depth.

Geophysical Surveys

Geophysical Vessels

Oceaneering uses vessel-mounted and AUV-mounted multibeam systems to meet shallow and deepwater geophysical survey requirements. Our vessels can be equipped with a variety of sonar, magnetometer, and seismic systems, including a state-of-the-art hydroscience seismic recording system to meet the multichannel seismic requirements of the current BOEM/BSEE Archaeological and Shallow Hazard Notice to Lessess (NTLs).



Typical Projects

- » 2D high-resolution seismic survey
- » Archaeological and hazard survey
- » AUV survey
- » Damage assessments
- » Exclusive economic zone survey
- » Geohazard assessment studies
- » Multibeam bathymetry survey
- » Pipeline/cable route preliminary survey

■ For more information: oceaneering.com/survey

© 2019 Oceaneering International, Inc. All rights reserved.