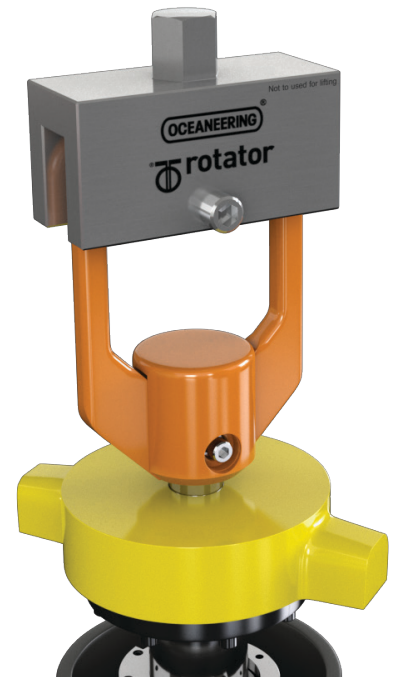


CTV D-Handle Topside Shop Tool

Enabling effective topside CTV installation

The Oceaneering® Rotator Chemical Throttle Valve (CTV) D-Handle Topside Shop Tool provides a safe, effective solution to apply the proper torque for CTV installation in a topside, shop environment. The tool protects the D-Handle's coating and prevents damage that could potentially lead to corrosion subsea.



FEATURES

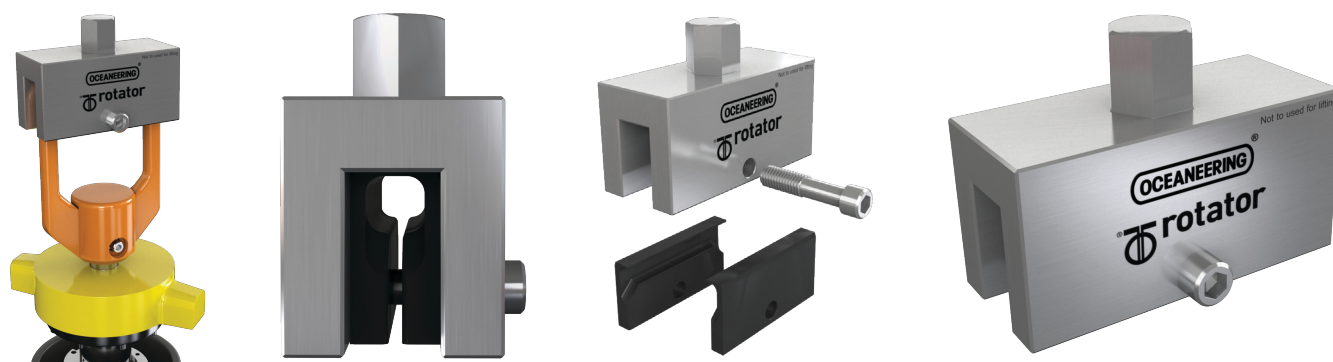
Connects to CTV D-Handle using bolts

Hex nuts enable easy installation

Protects CTV D-Handle coating during topside installation

CTV D-Handle Topside Shop Tool

Enabling effective topside CTV installation



This is an accessory to the CTV product line. It is for shop use only.

Technical Data

Design		Material	
Max torque	184 lbf.ft (250 Nm)	Main body	AISI316
Weight	2.2 lb (3.6 kg)	Clamping parts	POM-C Black
Interface to torque wrench	Hex head - width across flats: 30 mm	Socket screw	A4 Socket Screw - DIN912 - M12 x 60

The D-Handle Tool must not be used subsea.

The D-Handle Tool must not be used for lifting or handling of the CTV or CTV flushing dummy.