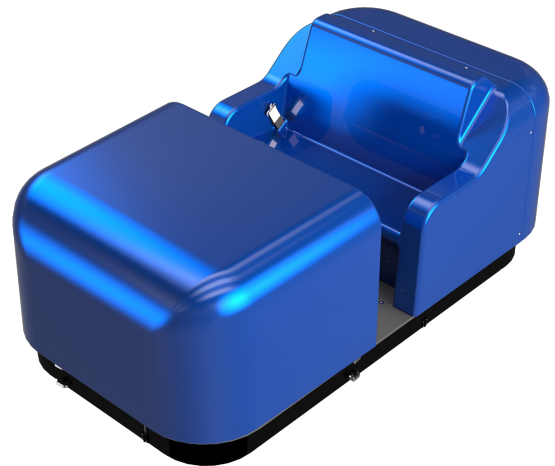


# REVO-TDX

## Tru-Trackless™ Ride System

REVO-TDX embodies the vision of REVOLUTION™ and the endless possibilities it makes available to interactive themed entertainment. Featuring Oceaneering's patented Tru-Trackless™ technology, the REVO-TDX ride system provides creative designers and storytellers with an innovative platform to conceive, design, and present show content. Strategically designed to be compact, the vehicle platform provides the seating space required for small groups to enjoy entertainment experiences together.



### FEATURES

**100% free-ranging and flexible ride programming**

**Ability to modify route profiles with no change to ride infrastructure**

**Compact clearance envelope and low seating position**

# REVO-TDX

## Tru-Trackless™ Ride System

### Technical Data

- » Cabin accommodates two adults and one child
- » Gang lap belt restraints (standard)
- » Customizable on-board audio system
- » Customizable, themed cabin with gel coat finish (paint and wraps available)
- » ADA transfer capable
- » Ability to integrate on-board gaming and other interactive effects

### Performance

|                                     |  |
|-------------------------------------|--|
| Steering                            | Omni-directional, crabbing, zero-turn radius   |
| Braking distance                    | Full Stop: 3.4 ft / 1.04 m   |
| Propulsion                          | Up to 6.6 ft/sec (2 m/sec) at an acceleration of .25 G   |
| Vehicle agility                     | Spinning angular velocity up to 2.6 rad/sec<br>Turning angular velocity (3 ft radius) up to 2.2 rad/sec<br>Crabbing angular velocity up to 6.5 ft/sec      |
| Vehicle dimensions (LxWxH)          | 102 x 59 x 57 in / 2.6 x 1.5 x 1.4 m   |
| Vehicle weight (empty)              | 2,685 lb / 1218 kg   |
| Cabin floor height                  | 9.5 in / 24.1 cm   |
| Lateral seat spacing                | 20 in / 50.8 cm  |
| Combined passenger weight (maximum) | 500 lb / 227 kg  |
| Environment                         | Indoor or outdoor rated vehicles<br>Floor flatness (Ff): 70, minimum local 50<br>Floor levelness (FL): 35, minimum local 25<br>Concrete strength: 4000 psi |

- For more information: [oceaneering.com/oes](https://oceaneering.com/oes)