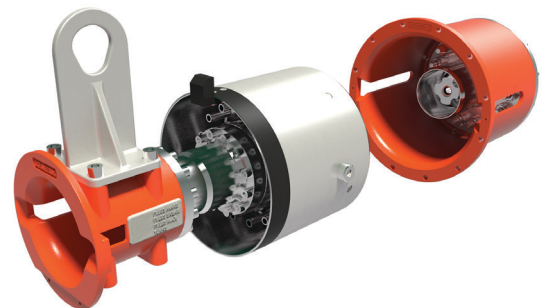


20k psi Subsea Junction Plate

Providing a multi-line, high-flow, ROV operable connection solution

Our 20k psi junction plate consists of fixed and removable assemblies configured to meet project-specific requirements. The plates enable remote connections to subsea structures supporting chemical delivery and hydraulic power supply to open and close subsea functioning control valves.

The 20k design is ideally suited for deepwater fields where operators must address and overcome operational hurdles associated with higher pressures, depths, and temperatures.



FEATURES

Operable at up to 20,000 psi and water depths of 10,000 ft

Multiple make/break solution with positive mating indicator

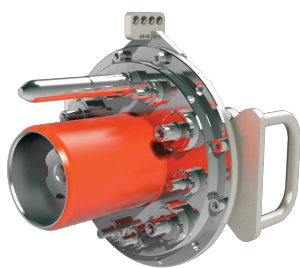
Includes secondary latch release and rough and fine alignment mechanisms

20k psi Subsea Junction Plate

Providing a multi-line, high-flow, ROV operable connection solution

The 20k design builds on the field proven M1 junction plate and integrates a strengthened mounting plate, newly qualified ½ inch couplers, and robust CRA tubes designed and qualified specifically for our high-pressure requirements.

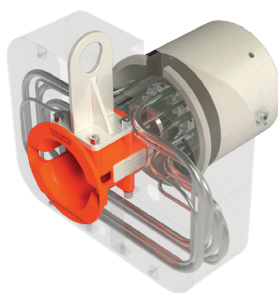
20k design	Maximum quantity 14, ½ in couplings at 20,000 psi
Plate types	Standard fixed and removable plates Fixed parking plates Long-term covers Test and flushing plates Logic plates
Coupling types	Standard with poppet PRVC Non-poppet Bleeding poppet Dummy Test Couplings can be provided with metal primary seal and elastomeric backup seal or elastomeric primary seal with no backup seal
Standard design parameters	ROV-operable 10,000 ft water depth Nominal design life of 30 years Design pressure: 20,000 psi [1379 bar] (20k design) Capable of making and breaking at 10k psi Plates designed to accommodate off-balance loads from couplings
Ancillary equipment	Shipping, short, and medium term covers available



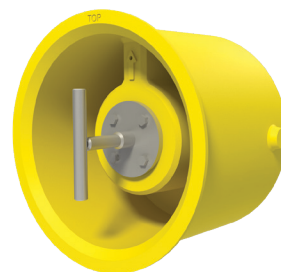
Test and Flushing Plate



ROV Bucket Cover



Logic Cap



Marine Growth Cover